

# SOLAR MOUNTING SOLUTIONS

---

# GLOBAL EXPERTISE PROVEN PERFORMANCE

From the vast hinterlands of Oceania to the bustling metropolises of Asia, from the innovative frontiers of the Americas to the pioneering rooftops of Europe, and across the sun-scorched plains of Africa—SAIL SOLAR's products have established their presence across six continents. This worldwide footprint demonstrates that our solutions are rigorously field-proven, confirming not only our ability to meet diverse regional requirements and standards but also driving a highly efficient cycle of innovation and intelligent manufacturing. Building on this foundation, we provide mounting solutions that comply with global standards, adapt to local conditions, and accommodate project-specific needs. Through robust products and seamless collaboration, we have become your trusted global partner.



Manufacturing facilities for both aluminum and steel products



Certification: TUV, UL 467, UL 2703, EN 1090 EXC 2 (system 2+), AS/NZS1170.2, and test with SGS



Experienced team since 2010



Direct racking supply



Global service



25 Years warranty



# Rail & Accessories

According to different markets, different customer requirements, as well as the project budget, we design and produce various types of rails and accessories to meet the customer's projects need. Each product is subjected to rigorous strength calculation, SGS testing, TUV, CE, and AS/NZS1170.2 certifications.



1 Item No. SAS-R52  
Description SAIL SOLAR 52mm Rail



2 Item No. SAS-R52L  
Description SAIL SOLAR 52mm L Rail



3 Item No. SAS-R26  
Description SAIL SOLAR 26mm Rail



4 Item No. SAS-R29  
Description SAIL SOLAR 29mm Rail



5 Item No. SAS-R41-2  
Description SAIL SOLAR 41mm Rail for Ballasted Mounting



6 Item No. SAS-R42  
Description SAIL SOLAR 42mm Rail



7 Item No. SAS-R43  
Description SAIL SOLAR 43mm Rail



8 Item No. SAS-R46  
Description SAIL SOLAR 46mm Rail



9 Item No. SAS-R50  
Description SAIL SOLAR 50mm Rail



10 Item No. SAS-R60  
Description SAIL SOLAR 60mm Rail



# Rail & Accessories

11 Item No. SAS-R62  
Description SAIL SOLAR 62mm Rail



12 Item No. SAS-R62C  
Description SAIL SOLAR 62mm C Rail



Item No. SAS-FEC-3540  
Description 35 & 40mm Exchange End Clamp Kit



19 Item No. SAS-AIC  
Description Universal Adjustable (30-40mm) Inner Clamp Kit



13 Item No. SAS-R65  
Description SAIL SOLAR 65mm Rail



14 Item No. SAS-R70  
Description SAIL SOLAR 70mm Rail



Item No. SAS-EIC  
Description Universal Adjustable (30-40mm) Inner Clamp Kit (Include Spring & Earthing Clip)



Item No. SAS-RCC  
Description Standard Rail Clamp with the Carriage Bolt



15 Item No. SAS-SFR-01  
Description Splice for Rail Kit 01



16 Item No. SAS-SFR-02  
Description Splice for Rail Kit 02



Item No. SAS-RCN  
Description Standard Rail Clamp with SAS Nuts Kit



Item No. SAS-RCB  
Description Standard Rail Clamp with T-Bolt Kit



17 Item No. SAS-SFR-06  
Description Inner Splice for Rail Kit 06



18 Item No. SAS-FEC-3035  
Description 30 & 35mm Exchange End Clamp Kit



Item No. SAS-FEC  
Description General End Clamp Kit



Item No. SAS-FCL  
Description General End Clamp Kit L=60mm



# Rail & Accessories

27 Item No. Description SAS-EMC Universal Adjustable (27.5-40mm) Mid Clamp Kit



28 Item No. Description SAS-NEC Universal Adjustable (27.5-35mm) End Clamp Kit



Item No. Description SAS-TIC Thin Film Double-glazed Module Inner Clamp Kit



35 Item No. Description SAS-TEC Thin Film Double-glazed Module End Clamp Kit



29 Item No. Description SAS-ACL Universal Adjustable (30-40mm) Inner Clamp Kit L=60mm



30 Item No. Description SAS-ECL Universal Adjustable (30-40mm) Inner Clamp Kit (Include Spring & Earthing Clip) L=60mm



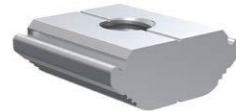
Item No. Description SAS-REL-A Standard Rail Earthing Plate Type A



37 Item No. Description SAS-REL-B Standard Rail Earthing Plate Type B



31 Item No. Description SAS-NUT SAS Nuts



32 Item No. Description SAS-PWC Solar Panel Water Drainage Clips



Item No. Description SAS-NBW SAS Nuts Assembly with Bolt and Washer Kit



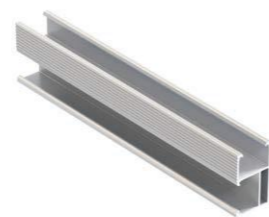
39 Item No. Description SAS-TBK T-Bolt Kit



33 Item No. Description SAS-REC SAS-R52 Rail & SAS-R52L Rail End Cover Cap



34 Item No. Description SAS-R42B SAIL SOLAR 42mm B Rail



Item No. Description SAS-ELG-02 Earthing Lug Kit 02



41 Item No. Description SAS-ELG-03 Earthing Lug Kit 03



# Rail & Accessories

43  
Item No. SAS-ELG-05  
Description Earthing lug kit 05 for 8mm cable



44  
Item No. SAS-CCP-01  
Description Cable Clip for PV Panels for Holding 3 Cables



45  
Item No. SAS-CCP-02  
Description Cable Clip for PV Panels for Holding 2 Cables



46  
Item No. SAS-CCP-03  
Description Cable Clip for PV Panels for Holding 3 Cables



47  
Item No. SAS-CCP-04  
Description Cable Clip for PV Panels for Holding 2 Cables



48  
Item No. SAS-CCP-05  
Description Cable Clip for PV Panels for Holding 4 Cables



49  
Item No. SAS-CCP-06  
Description Cable Clip for PV Panels for Holding 3 Cables



50  
Item No. SAS-CCP-07  
Description 90° Cable Clip for PV Panels for Holding 2 Cables



# Metal Roof Attachment

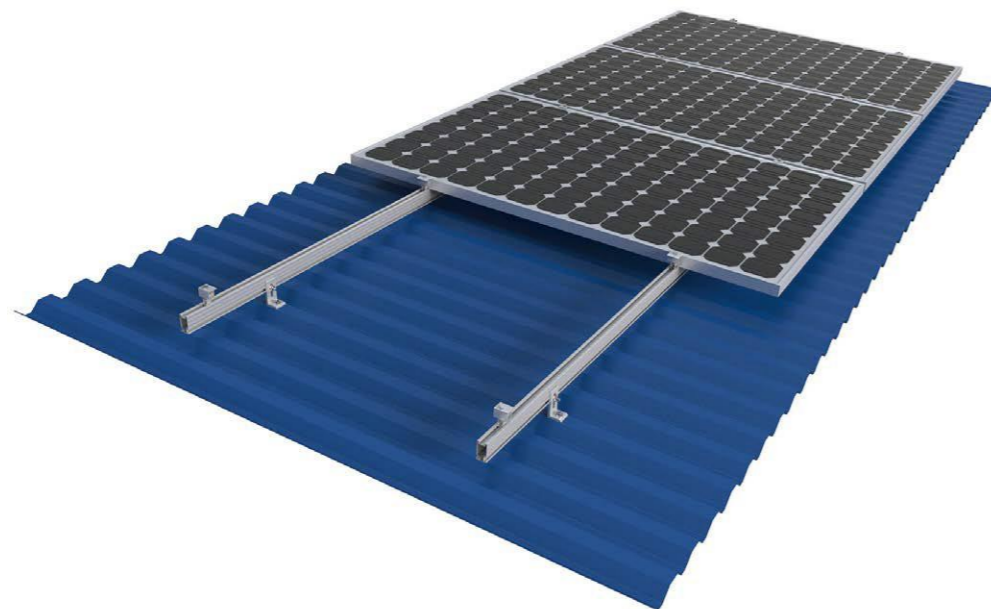
SAIL SOLAR Tin roof systems divided into two fixing methods

1. Drilling solutions, like bracket L-feet, hanger bolt, T type hook etc.
2. Standing seam clamp, direct mounting, no damage to the roof.

A design that includes major specifications saves you inventory cost, quick and easy to install. Innovative design of rail connect base-support can effectively increase the product strength, ensure the safety of the product use. SAIL SOLAR have a large variety of tin roof brackets for customers' choice Customization allowed according to customers' need to meet special installation requirements.

### Technical features:

Product name	Metal roof mounting system
Application	Metal roof
Inclination	Parallel to the roof
Material	AL 6005-T5, SUS 304, EPDM
Finish	AL 6005-T5 Anodized, SUS 304 Shot blasting
Module orientation	Landscape or Portrait



Item No. SAS-TRB-D01  
Description L Feet for Corrugated or Trapezoidal Sheet Metal



Item No. SAS-TRB-D01-01  
Description L Feet for Standing Seam Clamp



Item No. SAS-TRB-D03  
Description Hanger Bolt L Feet for Corrugated Fibre Cement, Corrugated or Trapezoidal Sheet Metal (M10×180, M10×200, M10×250, M10×300)



Item No. SAS-TRB-D05  
Description Hanger Bolt for Corrugated Fibre Cement, Corrugated or Trapezoidal Sheet Metal (M10×180, M10×200, M10×250, M10×300)



Item No. SAS-TRB-D06  
Description 6# Tin Roof Hook for Trapezoidal Sheet Metal



Item No. SAS-TRB-D07  
Description 7# Tin Roof Hook for Trapezoidal Sheet Metal



Item No. SAS-TRB-D08  
Description 8# Tin Roof Hook for Trapezoidal Sheet Metal



Item No. SAS-TRB-D09  
Description Asphalt Shingles Interface



# Metal Roof Attachment

9 Item No. SAS-TRB-D10  
Description 26mm Mini Rail for Corrugated or Trapezoidal Sheet Metal



10 Item No. SAS-TRB-D11  
Description 29mm U Type Rail for Corrugated or Trapezoidal Sheet Metal



17 Item No. SAS-TRB-D25  
Description Offset Hole L Feet for Corrugated or Trapezoidal Sheet Metal



18 Item No. SAS-TRB-D26  
Description Hanger Bolt Offset Hole L Feet for Corrugated Fibre Cement, Corrugated or Trapezoidal Sheet Metal (M10×180, M10×200, M10×250, M10×300)



11 Item No. SAS-TRB-D13  
Description 60mm Mini Rail for Corrugated or Trapezoidal Sheet Metal



12 Item No. SAS-TRB-D14  
Description 46mm Mini Rail for Corrugated or Trapezoidal Sheet Metal



19 Item No. SAS-TRB-D27  
Description Height adjust plate for L feet



20 Item No. SAS-TRB-D28  
Description 70mm Mini Rail for Corrugated or Trapezoidal Sheet Metal



13 Item No. SAS-TRB-D18  
Description 18# Tin Roof Hook for Trapezoidal Sheet Metal



14 Item No. SAS-TRB-D20  
Description 65mm Mini Rail for Corrugated or Trapezoidal Sheet Metal



21 Item No. SAS-TRB-D29  
Description 115mm T feet for Corrugated or Trapezoidal Sheet Metal



22 Item No. SAS-TRB-D30  
Description 50mm U Type Rail for Corrugated or Trapezoidal Sheet Metal



15 Item No. SAS-TRB-D21  
Description 21# Tin Roof Hook for Trapezoidal Sheet Metal



16 Item No. SAS-TRB-D22  
Description 142mm L Feet for Trapezoidal Sheet Metal



23 Item No. SAS-TRB-D31  
Description 165mm L Feet for Corrugated or Trapezoidal Sheet Metal



24 Item No. SAS-TRB-D32  
Description 152mm L Feet for Trapezoidal Sheet Metal



# Metal Roof Attachment

25 Item No. SAS-TRB-D33  
Description 120mm Two Holes L Feet for Corrugated or Trapezoidal Sheet Metal



26 Item No. SAS-TRB-D34  
Description Trapezoidal Sheet Metal Base



Item No. SAS-TRB-C01  
Description Klip Lok 406 & 700 Interface



30

27 Item No. SAS-TRB-D35  
Description Corrugated Sheet Metal Base



28 Item No. SAS-TRB-D37  
Description L Feet Adapter for Corrugated Sheet Metal



Item No. SAS-TRB-C02  
Description Klip Lok 406 & 700 Interface

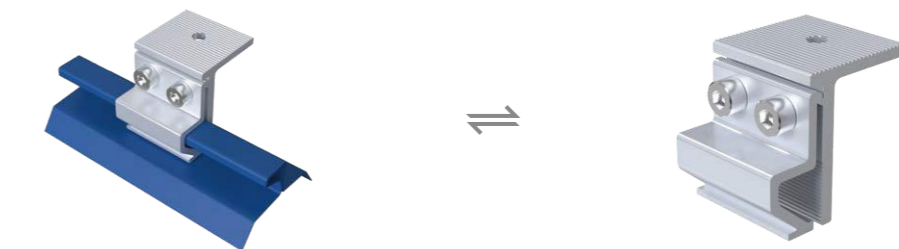


31

29 Item No. SAS-FTH  
Description Flat Rooftop Thermal and Hydro Insulation

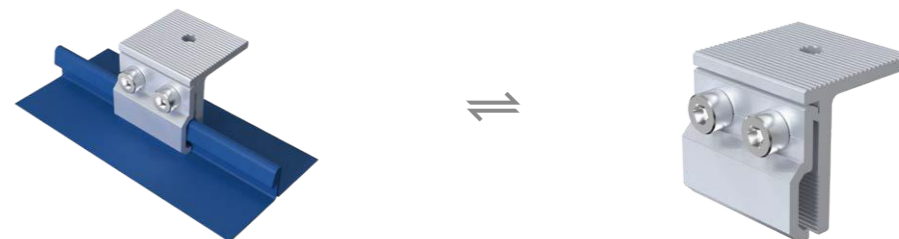


Item No. SAS-TRB-C04  
Description Standing Seam Clamp



32

Item No. SAS-TRB-C05  
Description Standing Seam Clamp



33

# Metal Roof Attachment

34  
Item No. SAS-TRB-C06  
Description Standing Seam Clamp



Item No. SAS-TRB-C15  
Description Metdek 500 Interface



38

35  
Item No. SAS-TRB-C10  
Description Stainless Steel Tin Interface Bracket

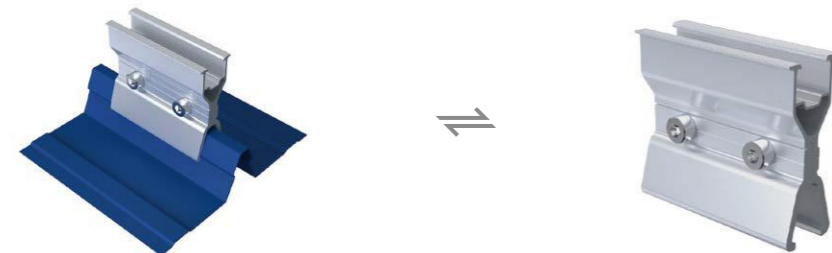


Item No. SAS-TRB-C16  
Description RiverClack Roofing Profile



39

36  
Item No. SAS-TRB-C13  
Description Lysaght Klip-lok Interface

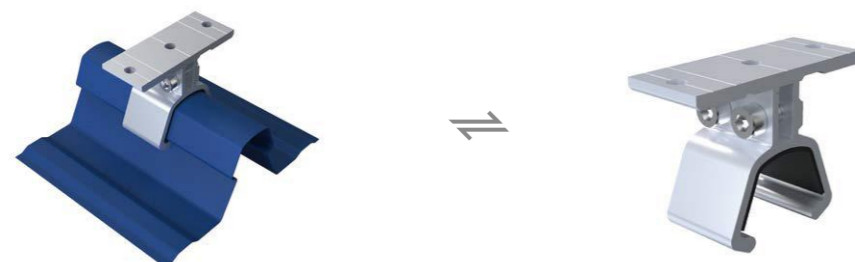


Item No. SAS-TRB-C20  
Description Lysaght Klip-lok 406 Interface



40

37  
Item No. SAS-TRB-C14  
Description Metdek 855 Dimondek 630 Interface



Item No. SAS-TRB-C21  
Description Kalzip Standing Seam Clamp.



41

# Metal Roof Attachment

42 Item No. SAS-TRB-C22  
Description KR-18 Metal Roof Standing Seam Clamp.



Item No. SAS-TRB-C26  
Description WeatherClip II 700 Interface



46

43 Item No. SAS-TRB-C23  
Description Klip Lok 700 Interface



Item No. SAS-TRB-C27  
Description Klip Lok 700 Interface



47

44 Item No. SAS-TRB-C24  
Description Standing Seam Clamp



Item No. SAS-TRB-C29  
Description Lysaght Klip-lok 406 Interface



48

45 Item No. SAS-TRB-C25  
Description Klip Lok 700 Interface



Item No. SAS-TRB-C30  
Description WeatherClip II 700 Interface



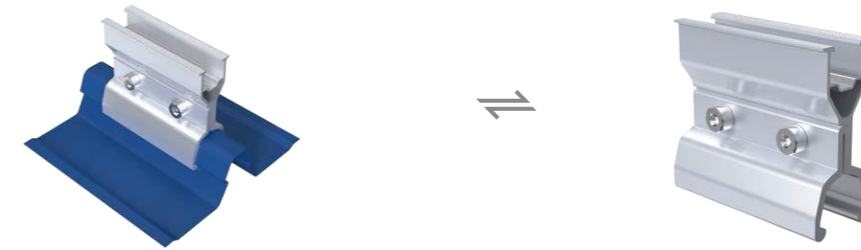
49

# Metal Roof Attachment

50  
Item No. SAS-TRB-C32  
Description Valio Metal Sheet Roof Interface



Item No. SAS-TRB-C38  
Description Lysaght Klip-lok 700 Interface



54

51  
Item No. SAS-TRB-C33  
Description Standing Seam Clamp

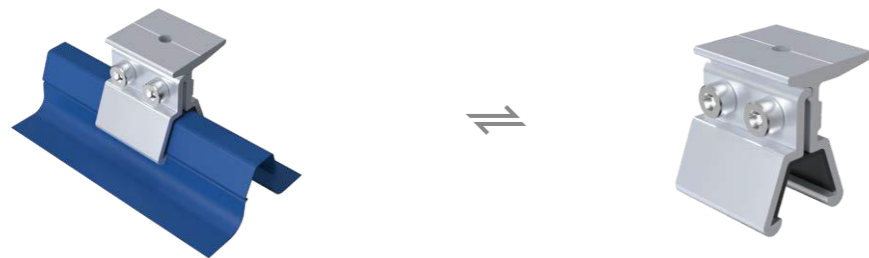


Item No. SAS-TRB-C39  
Description Lysaght Klip-lok 700 Interface

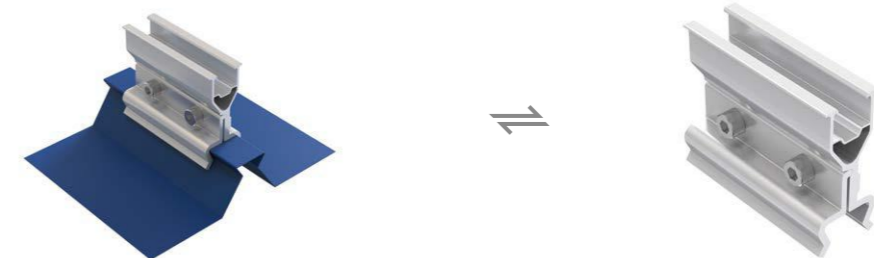


55

52  
Item No. SAS-TRB-C36  
Description Standing Seam Clamp



Item No. SAS-TRB-C49  
Description UNI-ENERGY Sandwich Roof Standing Seam Clamp



56

53  
Item No. SAS-TRB-D37  
Description L Feet Adapter for Corrugated Sheet Metal



Item No. SAS-TRB-C52  
Description Kalzip Standing Seam Clamp



57

# Tile Roof Attachment

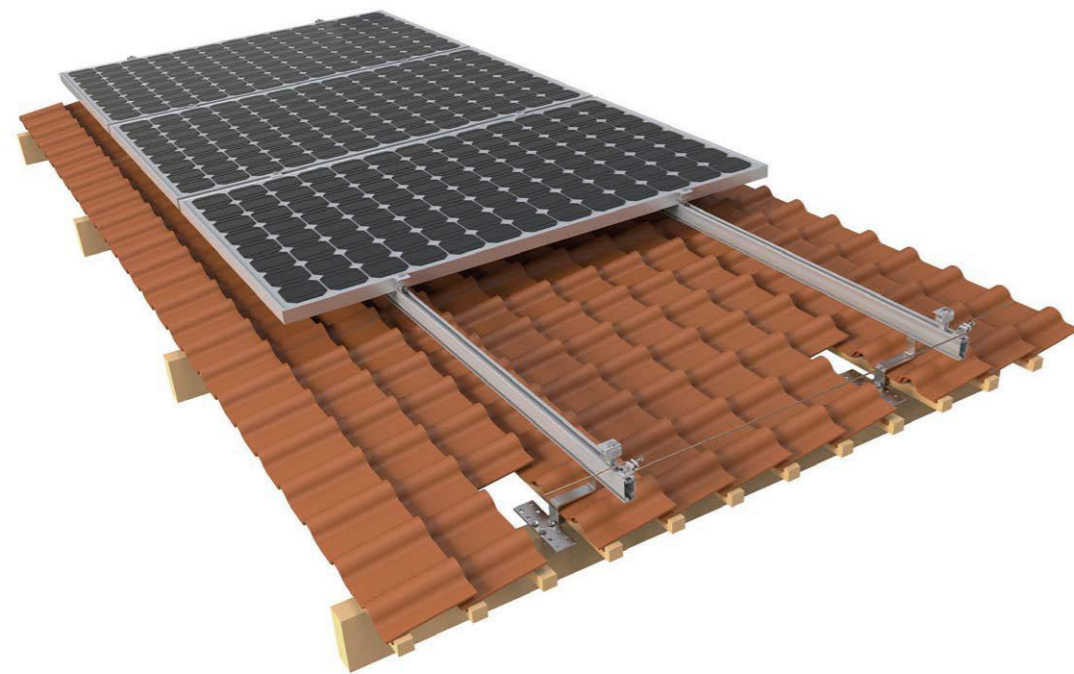
SAIL SOLAR has many types of tile roof hooks, suitable for most roof types of tile, flat tile, slate tile, asphalt shingle tile.

A design that includes major specifications saves you inventory cost, quick and easy to install. Innovative design of rail connect base-support can effectively increase the product strength, ensure the safety of the product use.

SAIL SOLAR has a large variety of roof hooks provide customers options.

Customization allowed according to customers' need to meet special installation requirements.

Product name	Tile roof mounting system
Application	Tile roof, Flat tile roof, Slate roof
Inclination	Parallel to the roof
Material	AL 6005-T5, SUS 304
Finish	AL 6005-T5 Anodized, SUS 304 Shot blasting
Module orientation	Landscape or Portrait



Item No. Description  
SAS-TRH-T01  
Tile Roof Hook



1

Item No. Description  
SAS-TRH-T02  
Tile Roof Hook



2

Item No. Description  
SAS-TRH-T03  
Tile Roof Hook



3

Item No. Description  
SAS-TRH-T04  
Tile Roof Hook  
for Holding 3 Cables



4

Item No. Description  
SAS-TRH-T05  
Tile Roof Hook



5

Item No. Description  
SAS-TRH-T06  
Tile Roof Hook



6

Item No. Description  
SAS-TRH-T07  
Tile Roof Hook



7

Item No. Description  
SAS-TRH-T08  
Tile Roof Hook



8

# Tile Roof Attachment

9

Item No. SAS-TRH-T09  
Description Tile Roof Hook



10

Item No. SAS-TRH-T10  
Description Tile Roof Hook



17

Item No. SAS-TRH-F01  
Description Flat Tile Roof Hook



18

Item No. SAS-TRH-F02  
Description Flat Tile Roof Hook



11

Item No. SAS-TRH-T11  
Description Tile Roof Hook



12

Item No. SAS-TRH-T12  
Description Tile Roof Hook



19

Item No. SAS-TRH-F03  
Description Flat Tile Roof Hook



20

Item No. SAS-TRH-F04  
Description Flat Tile Roof Hook



13

Item No. SAS-TRH-T13  
Description Tile Roof Hook



14

Item No. SAS-TRH-T14  
Description Tile Roof Hook



21

Item No. SAS-TRH-F05  
Description Flat Tile Roof Hook



22

Item No. SAS-TRH-F06  
Description Flat Tile Roof Hook



15

Item No. SAS-TRH-T15  
Description Tile Roof Hook



16

Item No. SAS-TRH-T16  
Description Tile Roof Hook



23

Item No. SAS-TRH-F07  
Description Flat Tile Roof Hook



24

Item No. SAS-TRH-S01  
Description Slate Roof Hook



# Tile Roof Attachment

25

Item No. SAS-TRH-S02  
Description Slate Roof Hook



26

Item No. SAS-TRH-S04  
Description Slate Roof Hook



Item No. SAS-TRH-T24  
Description Tile Roof Hook



33

Item No. SAS-TRH-T26  
Description Tile Roof Hook



34

Item No. SAS-TRH-S05  
Description Slate Roof Hook



28

Item No. SAS-TRH-T17  
Description Tile Roof Hook



Item No. SAS-TRH-T27  
Description Tile Roof Hook



35

Item No. SAS-TRH-T28  
Description Tile Roof Hook



36

29

Item No. SAS-TRH-T18  
Description Tile Roof Hook



30

Item No. SAS-TRH-T19  
Description Tile Roof Hook



Item No. SAS-TRH-T29  
Description Adjustable Tile Roof Aluminum Hook



37

31

Item No. SAS-TRH-T20(t=6mm)  
Description Tile Roof Hook



32

Item No. SAS-TRH-T22  
Description Tile Roof Hook



# U Plus Series

U Plus series is the new pitched roofs products of SAIL SOLAR.

1. Use the U type rail and Aluminum clamps combination make installation easier and faster than traditional installation methods, saving more time for installer;
2. Hidden rail connection will be more beautiful and integrated, completely avoiding mutual interference with mid clamp;
3. The U type design of R43 rail can store cables inside the U type rail, making it more neatly and beautiful;
4. U Plus series can be fully compatible with the existing standard products of SAIL SOLAR, so for this not need to worry;
5. We offer two colors silver and black oxidation for your choose.

## Technical features:

Product name	U plus series
Application	Pitched roof
Inclination	Parallel to the roof
Material	AL 6005-T5, SUS 304
Finish	Al6005-T5 Anodized, SUS304 Shot Blasting
Module orientation	Landscape or Portrait

## Assembly



## Assembly



**SAS-R43**



**SAS-SFR-05**



**SAS-EIC**



**SAS-FEC**



**SAS-URC**  
(Suitable for horizontal fixed hooks such as D03 and T16)



**SAS-UAC**  
(Suitable for vertical fixed hooks such as D01 and T01)

# Tilt Mounting



SAIL SOLAR adjustable tilt system is used for metal roof concrete roof. Fixed or adjustable angles as 10-15 deg, 15-30 deg and 30-60 degree are for your option to maximize energy production. All Products pre-assembled before shipment, to make the installation easy and quick. Unique design of inner and outer tube with adjustable joints, makes structure stronger, different from the same type products on the market today, and widely compatible with standing seam clamp.

Technical features:	
Product name	Adjustable tilt mounting system
Application	Flat concrete roof, metal roof
Inclination	10-15°, 15-30°, 30-60° or customized
Material	AL 6005-T5, SUS 304, EPDM
Finish	AL 6005-T5 Anodized
Module orientation	Landscape or Portrait

## 1 Assembly

Item No. | SAS-AFL  
Description | Adjustable Front Leg



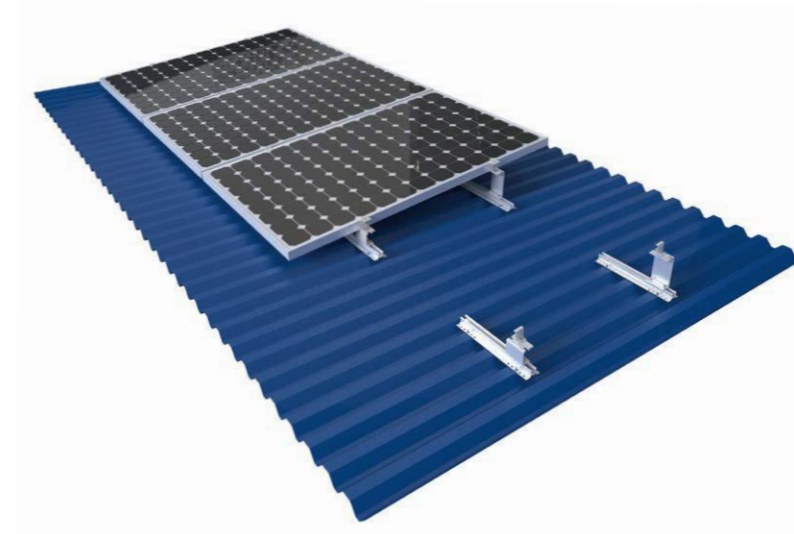
Item No. | SAS-FEC  
Description | General End Clamp Kit



Item No. | SAS-EIC  
Description | Universal Adjustable (30-40mm) Inner Clamp Kit (Include Spring & Earthing Clip)



Item No. | SAS-ARL-1015  
SAS-ARL-1530  
SAS-ARL-3060  
Description | 10-15° Adjustable Rear Leg  
15-30° Adjustable Rear Leg  
30-60° Adjustable Rear Leg



Mini Rail with 5 degree support base, lift up the height of the solar panel to achieve cooling conditions, thus maximizing power generation. Simple design, easy to install, with good price.

Technical features:	
Product name	Mini Rail Support mounting system
Application	Metal roof
Inclination	5°, 10°
Material	AL 6005-T5, SUS 304
Finish	AL 6005-T5 Anodized
Module orientation	Portrait

Item No.   Description	SAS-MFS-5   Mini Rail 5° Support Front Leg	Item No.   Description	SAS-MRS-5   Mini Rail 5° Support Rear Leg	Item No.   Description	SAS-MFS-10   Mini Rail 10° Support Front Leg
------------------------	--	------------------------	---	------------------------	--



## 1 Assembly

Item No. | SAS-FEC-BS  
Description | General End Clamp Kit



Item No. | SAS-AIC-BS  
Description | Universal Adjustable (30-40mm) Inner Clamp Kit



Item No. | SAS-TRB-D10  
Description | 26mm Mini Rail for Corrugated or Trapezoidal Sheet Metal



Item No. | SAS-MRS-10  
Description | Mini Rail 10° Support Rear Leg



# Tilt Mounting



SAIL SOLAR Tripod system is used for metal roof concrete roof, you can adjust angles as 10-15deg, 15-30deg and 30-60deg options to maximize energy production. All Products pre-assembled before shipment, to make the installation easy and quick for saving your labor cost and time. Customized angle allowed according to customers' need to meet special installation requirements.

### Technical features:

Product name	Tripod mounting system
Application	Flat concrete roof, metal roof, open terrain
Inclination	Customized
Material	AL 6005-T5, SUS 304
Finish	AL 6005-T5 Anodized
Module orientation	Landscape or Portrait



## 1 Assembly

Item No. | SAS-FTP  
Description | The Fixing Angle Tripod



Item No. | SAS-ATP  
Description | The Adjustable Angle Tripod



Item No. | SAS-R52  
Description | SAIL SOLAR 52mm Rail



Item No. | SAS-EIC  
Description | Universal Adjustable (30-40mm) Inner Clamp Kit (Include Spring & Earthing Clip)



Item No. | SAS-FEC  
Description | General End Clamp Kit



SAIL SOLAR Tripod systems have fixed angle and adjustable angle design for options.



1.Fixed Angle Tripod system(SAS-FTP-X): According to customers' need ,we customize different sizes and angles to make a fast, easy and lower cost installation, this is Suitable for installation at known building angle.



2.Adjustable Angel Tripod (SAS-ATP-X): According to the site need to adjust the tripod angle for installation demand. It is suitable for multi-angle installation projects.

## 2 Assembly

Beam



U Base



32-32 AL Tube



## 3 Assembly

Beam



U Base



32-32 AL Tube



27-27 AL Tube



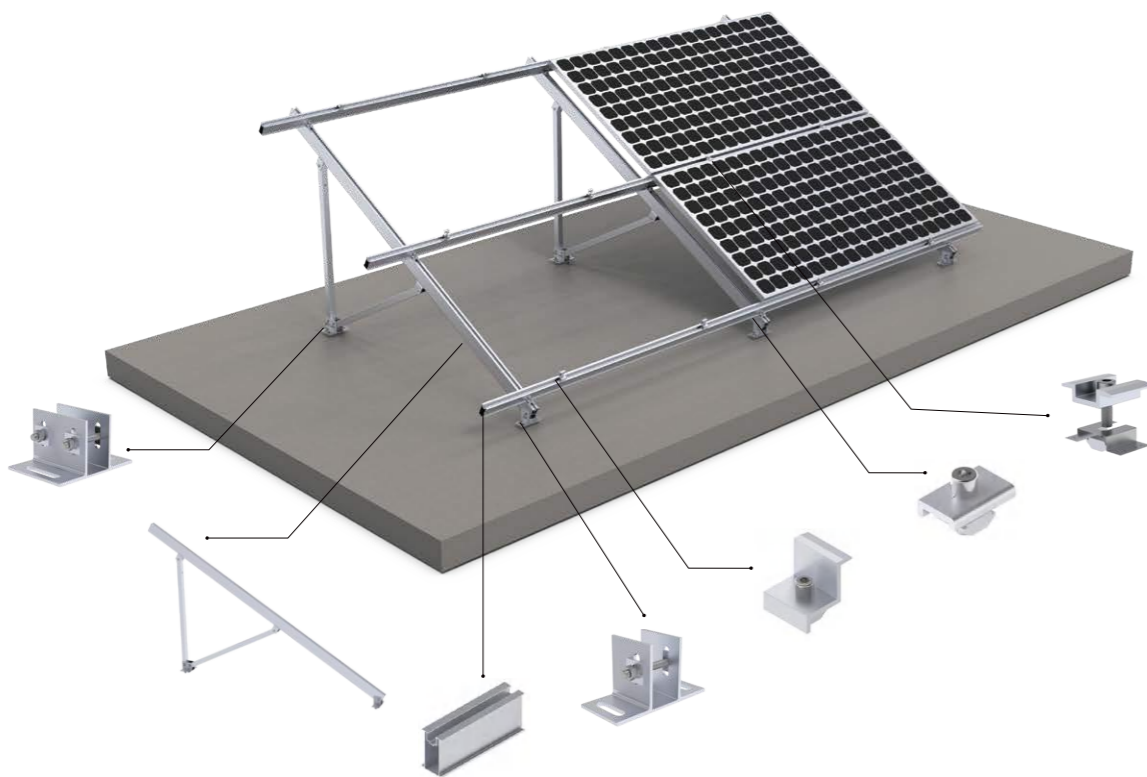
# Maxi Tripod System

Large tripod Strong wind and snow resistance, simple and convenient installation, can be installed on the cement flat roof and the ground. Different angles can be designed to meet the sunshine requirements of different regions.

## Technical features:

Product name	Maxi tripod mounting system
Application	Flat concrete roof, open terrain
Inclination	Customized
Material	AL 6005-T5, SUS 304
Finish	Anodized
Module orientation	Landscape or Portrait

## Assembly



## Assembly



SAS-MTP



SAS-GRC



SAS-R80



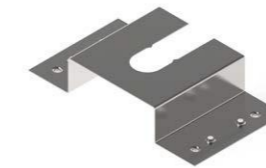
SAS-SFR-R80



SAS-GIC



SAS-GEC



SAS-GEL



SAS-ELG



SAS-GB2-01



SAS-GB2-02

# Ballasted-PRO Mounting



## 10 or 15 Degree dual tilt

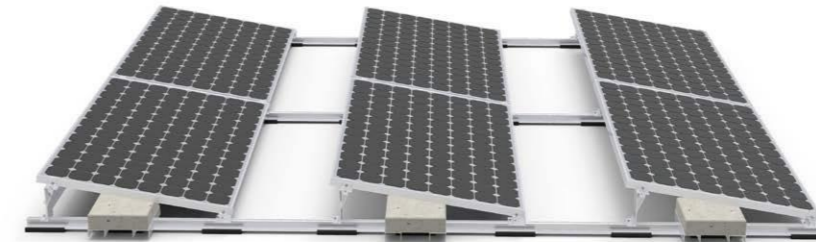
- Maximal area utilized
- Maximal PV quantity installed
- SAIL SOLAR E-W 10 or 15 is for solar installed on a flat roof, for maximized roof space utilized, and PV quantity installed.
- All parts are made of extruded aluminum, with stainless steel 304 fasteners
- EPDM foam tape is installed at the bottom of the system, separated the roof and system.
- EPDM foam tape provides better friction, and compensates for the height difference when the roof is uneven.

### Technical features:

Product name	E-W 10 or 15
Application	Flat roof
Tilt	10° or 15°
System Material	extruded aluminum profile 6005 T5
Fastener material	Stainelss steel 304
Finish	Anodized
Module orientation	Landscape



## 1 Assembly

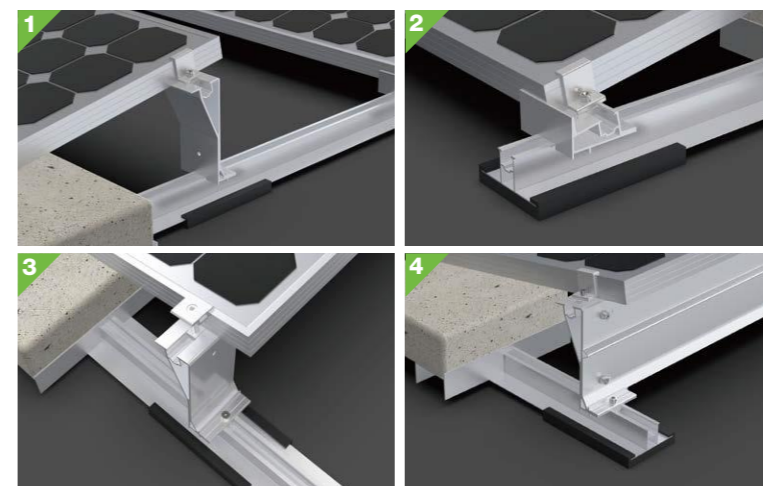


## 10 or 15 Degree tilt

- Better panel output
- The SAIL SOLAR S Ballast is for solar PV to be fast and easily installed on a flat roof with 10 or 15 tilt degree inclination. All parts are made of extruded aluminum, with stainless steel 304 fasteners
- EPDM foam tape is installed at the bottom of the system, separated the roof and system.
- EPDM foam tape provides better friction and compensates for the height difference when the roof is uneven.

### Technical features:

Product name	S 10 or 15
Application	Flat roof
Tilt	10° or 15°
System Material	extruded aluminum profile 6005 T5
Fastener material	Stainelss steel 304
Finish	Anodized
Module orientation	Landscape



## 2 Assembly

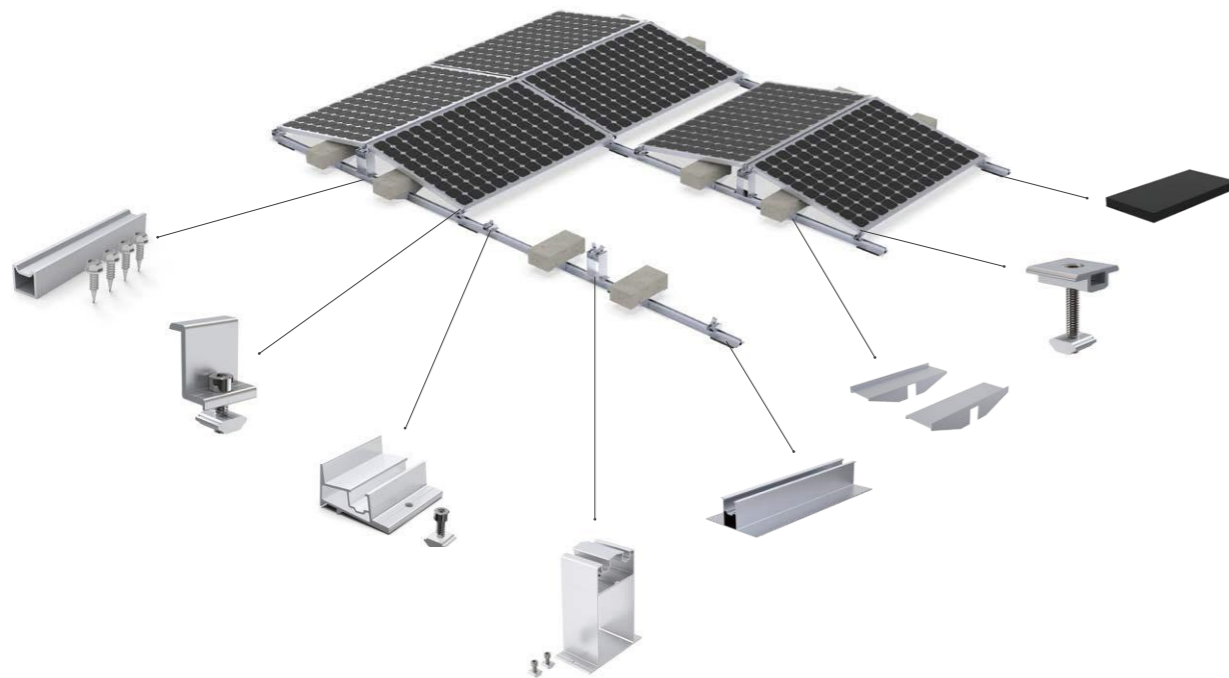


# Ballasted-Pro East-West Integrated Rear Leg

Ballasted - Pro East-West integrated rear leg is suitable for the east - west installation of Ballasted - Pro Systems, enriching the product line of Ballasted - Pro Systems.  
 Ballasted - Pro East-West integrated rear leg simplifies the installation process and significantly reduces the number of installation steps and operations. This makes the installation more convenient and efficient, effectively reducing the overall project cost and making the entire system more integrated. There are two angle options: 10 degrees and 15 degrees. These two angle options are compatible with SAS - BPF - 10 and SAS - BPF - 15.

## Technical features:

Product name	Ballasted - Pro East-West integrated rear leg
Application	Concrete flat roof or trapezoidal sheet metal roof
Tilt	10° or 15°
System material	AL6005-T5, EPDM
Fastener material	SUS 304
Finish	Anodized
Module orientation	Landscape



## Assembly



SAS-BPF-10 SAS-BPF-15



SAS-BIP-10 SAS-BIP-15



SAS-AIC



SAS-FEC



SAS-BST-02



SAS-R41-02



SAS-SFR-04



SAS-EFT-03

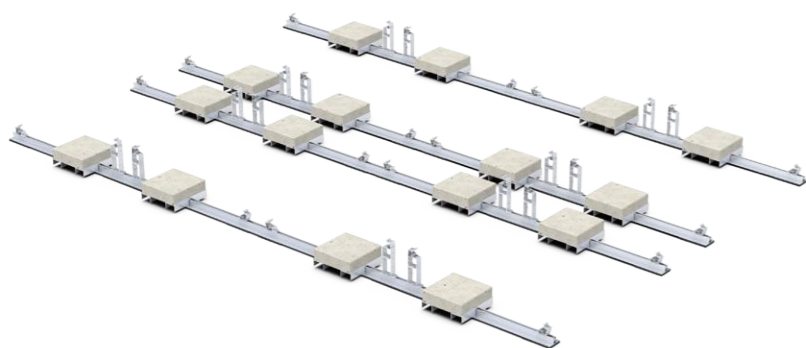
# Ballasted-ULT Mounting



SAIL SOLAR East & West Ballasted-Ult Systems suitable for concrete flat roof and trapezoidal sheet metal roof. Unlike the traditional solar panel fixing method, whose fixing point at the end of the long side of the panel, this series help solar panels to be fixed anywhere on the long side. Therefore, solar panels could withstand greater wind and snow pressure. There is no need to use expansion bolts or chemical bolts on the roof, no damage to roof. The system connects all the panels with the rails into a whole. East-west facing panels have a great effect on resisting wind loads. A combination of high quality aluminium components make a robust, reliable system and quick and easy installation.

### Technical features:

Product name	Ballasted-ULT Series
Application	Concrete flat roof and trapezoidal sheet metal roof
Tilt	10° or 15°
System Material	Extruded aluminum profile 6005 T5, EPDM
Fastener material	Stainless steel 304
Finish	Anodized
Module orientation	Landscape



## 1 Assembly

- SAS-BUF-10
- SAS-BUS-10
- SAS-BUF-15
- SAS-R41-02
- SAS-R41-03
- SAS-BST-02

### Product Feature:

Solar panels could withstand greater wind and snow pressure.  
 Maximal area utilized.  
 Maximal PV quantity installed.  
 Maximized roof space utilized, and PV quantity installed.  
 Better panel output.  
 Solar PV to be fast and easily installed on a flat roof with 10 tilt degree inclination.  
 All parts are made of extruded aluminum, with stainless steel 304 fasteners.  
 EPDM foam tape is installed at the bottom of the system, separated the roof and system.  
 EPDM foam tape provides better friction and compensates for the height difference when the roof is uneven.



East & West 10° for concrete flat roof



South or North 10° for concrete flat roof



South or North 10° for trapezoidal sheet metal roof

## 2 Assembly

- SAS-BUR-15
- SAS-BUR-10
- SAS-SFR-04
- SAS-EFT-03

# Ballasted-Ult East-West Integrated Rear Leg

Ballasted-Ult East-West integrated rear leg is suitable for the Ballasted-Ult Systems East-West layout installation, it has the same advantages as Ballasted-Ult Systems, can be installed in any position on the long side of the solar panels. Maximize to realize the strength of solar panels against the wind load and snow load. East-West integrated rear leg support simplify the number of installation, making it more easy and convenient, more efficient and faster, can effectively reduce the cost of whole project. Innovative rear leg inner clamp is more convenient for installation and make the whole systems more integrated, there are two choice 10 degree and 15 degree for your choose, compatible with SAS-BUF-10 and SAS-BUF-15.

## Technical features:

Product name	Ballasted-Ult East-West integrated rear leg
Application	Concrete flat roof or trapezoidal sheet metal roof
Tilt	10° or 15°
System material	AL6005-T5, EPDM
Fastener material	SUS 304
Finish	Anodized
Module orientation	Landscape

## Assembly

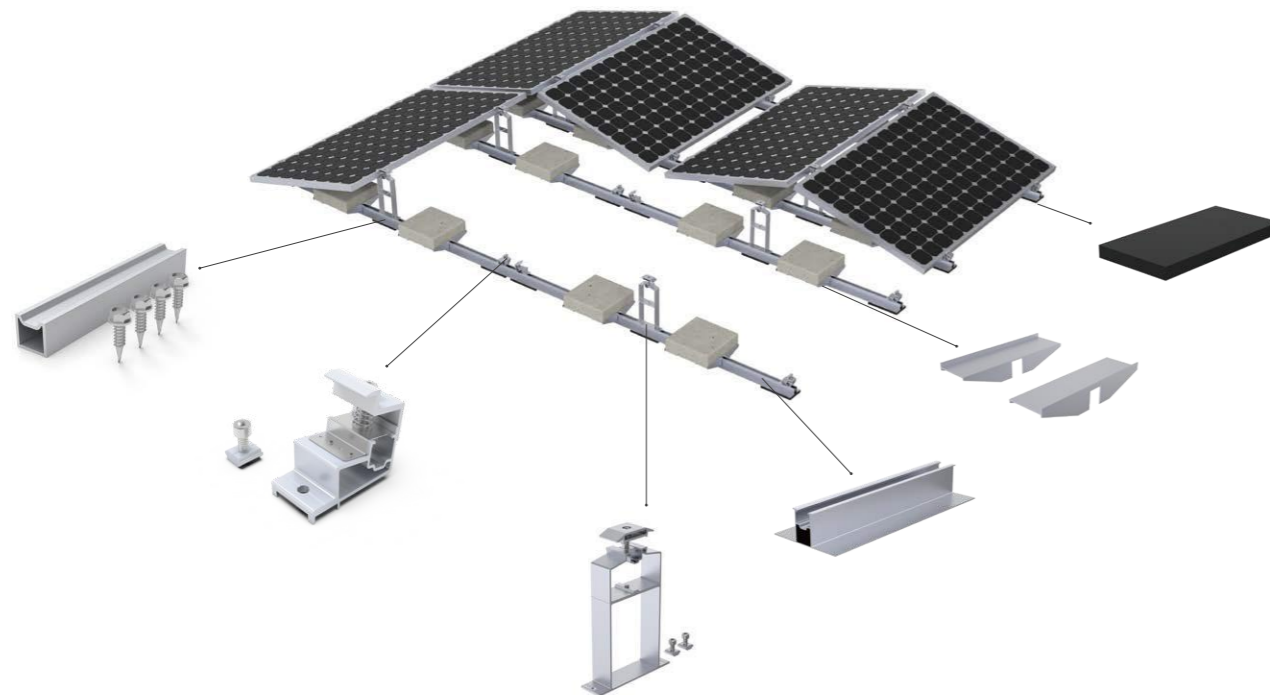


SAS-BUF-10 SAS-BUF-15 SAS-BUS-10 SAS-BUS-15

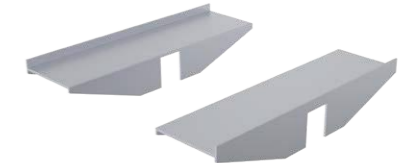


SAS-BIR-10 SAS-BIR-15

## Assembly



SAS-R41-02



SAS-BST-02

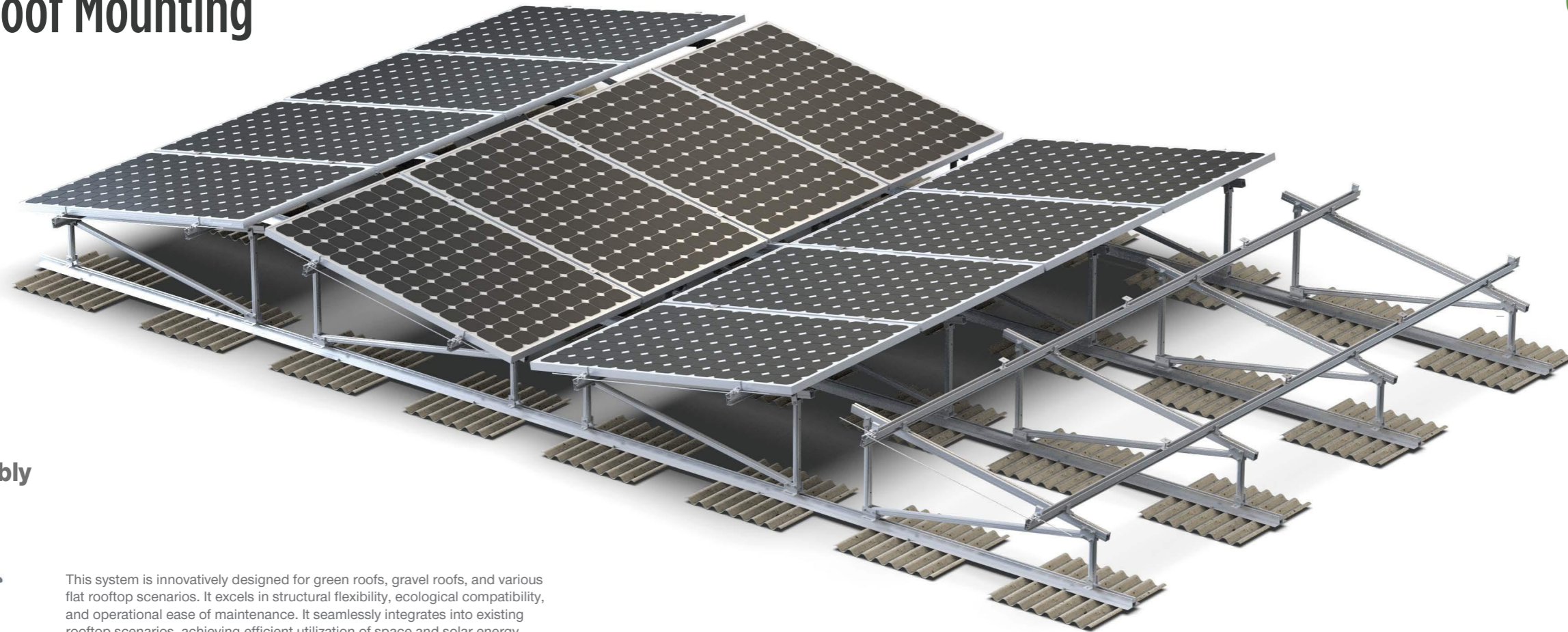


SAS-SFR-04



SAS-EFT-03

# Green Roof Mounting



## 1 Assembly

SAS-EIC



This system is innovatively designed for green roofs, gravel roofs, and various flat rooftop scenarios. It excels in structural flexibility, ecological compatibility, and operational ease of maintenance. It seamlessly integrates into existing rooftop scenarios, achieving efficient utilization of space and solar energy resources.

SAS-FEC



### Key Features:

#### 1.Highly Flexible Module Configuration

- **Adaptable Orientation and Tilt Angle:**  
Supports both landscape and portrait installation of PV modules, with tilt options of 10° or 15° to optimize sunlight utilization across different latitudes.
- **Multi-Topology System Layout:**  
Offers layout shapes such as A-frame and V-frame, allowing users to select the optimal configuration based on project requirements.

SAS-RCB



- **Adjustable Module Spacing:**  
Supports flexible and variable array spacing, taking into account the needs of operation and maintenance channels, vegetation lighting and component cleaning.

SAS-NTP



## 2 Assembly

SAS-R41-02



SAS-R41-03



SAS-R52



SAS-R80



SAS-GRB



SAS-SDS-625



### 2.Excellent Ecological Roof Compatibility

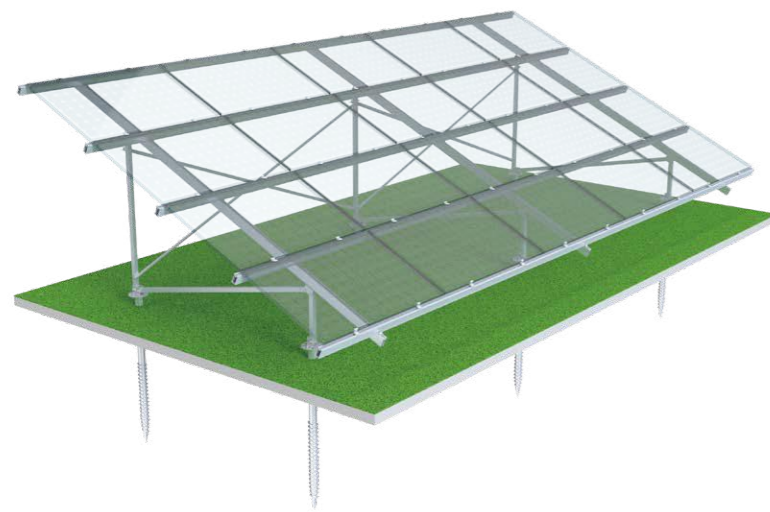
- **Roof-Friendly Elevated Design:**  
The system's modular brackets create ample space between the solar panels and the roof, ensuring space for vegetation growth and facilitating easy maintenance.
- **Non-Penetrating Installation:**  
A non-perforated mounting base maximizes protection of the roof's waterproofing layer and greening structure, eliminating the risk of water seepage.

### 3.Robust Structure and Broad Applicability

- The system offers excellent wind and snow load resistance, adapting to various climatic conditions.
- Made primarily of high-strength aluminum alloy, it offers strong corrosion resistance and a long service life.
- Suitable for both new construction and retrofit projects, including flat lightweight roofs, concrete roofs, and other substrate types.

With this system, users can achieve high power generation efficiency while preserving or enhancing rooftop greenery, promoting harmonious coexistence between architecture and ecology.

# Ground Mounting



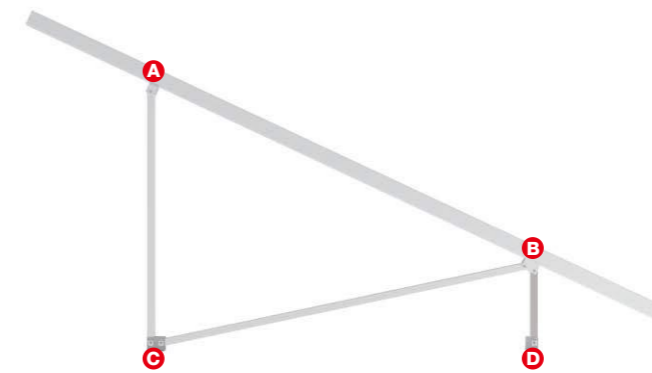
## Standard Ground Mounting System

Aluminum ground mount, optimized for lightweight, quick and efficient installation with flexible on engineering upon site conditions. Optional on foundation by ground screw or concrete. Maximize pre-assembled before shipment

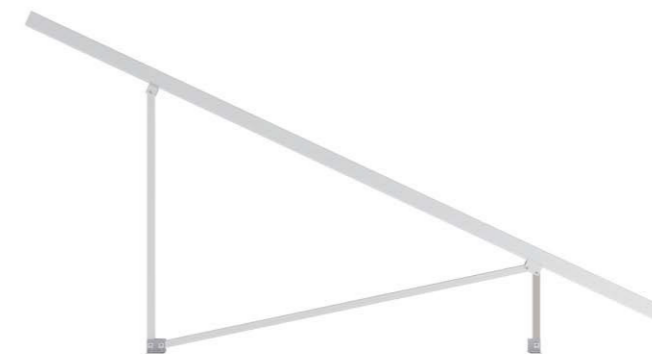
### Technical features:

Product name	Standard ground mounting system
Application	Flat concrete roof, open terrain
Inclination	Customized
Material	AL 6005-T5, SUS 304, Q235
Finish	AL 6005-T5 Anodized, Q235 Hot-dip galvanizing
Module orientation	Landscape or Portrait

## 1 Assembly



Ground mounting system has been maximized pre-assembly before shipment, which make the installation more convenient.



N-Type



W-Type

## 2 Assembly



Depending on the different design conditions, pre-assembly support is generally designed into the following two shapes:

The N-Type pre-assembly support is mainly used for the small wind & snow load condition projects.(2-4 columns)

The W-type pre-assembly support is mainly for the 4-5 columns wind & snow load condition projects. We will add cross support to make the structure stronger if the ground height is higher or wind & snow load is larger.

# Ground Mounting



## U Pile Ground Mounting System

SAIL SOLAR U Pile Ground Mounting Systems suitable for large scale power station installation, Pile to the ground makes installation faster and lower cost than others. Each components are Maximize pre-assembled, widely save your labor cost and installation time. Customization allowed according to project wind & snow load, provide economic & effective solutions.

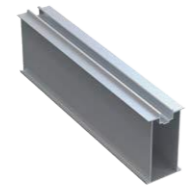


### 1 Assembly

SAS-GIC



SAS-R80



SAS-GEC



SAS-GRC



SAS-W50



### 2 Assembly

SAS-US-60



SAS-B105



SAS-GS



SAS-UBS



SAS-CH3-01



The U type Pile Ground Mounting System has been folded into a rectangular shape before shipment. Easy to transport.

#### Technical features:

Product name	U Pile ground mounting system
Application	Open terrain
Inclination	Customized
Material	AL 6005-T5, SUS 304, Q235
Finish	AL 6005-T5 Anodized, Q235 Hot-dip galvanizing
Module orientation	Landscape or Portrait

Penetration depth	Conventional U pile compression and tensile strength reference values (KN)							
	N=3		N=5		N=7		N=10	
	Resistance	Compression Resistance	Resistance	Compression Resistance	Resistance	Compression Resistance	Resistance	Compression Resistance
1500	9.5	11.5	15.7	19.3	21.9	27	31.13	38.6
1600	10.1	12.3	16.7	20.6	23.3	28.8	3.235	41.2
1700	10.8	13.1	17.8	21.8	24.8	30.6	.337.	43.7
1800	11.4	13.9	18.8	23.1	26.2	32.4	341.4	46.3
2000	12.6	15.4	20.8	25.7	29.1	36	45.65	51.5
2200	13.8	17	22.9	28.3	32	39.6	1.7	56.6
2500	15.7	19.3	26	32.1	36.3	45		64.3

Remarks: The N value of the soil in this table are based on the Swedish penetration test (SWS).

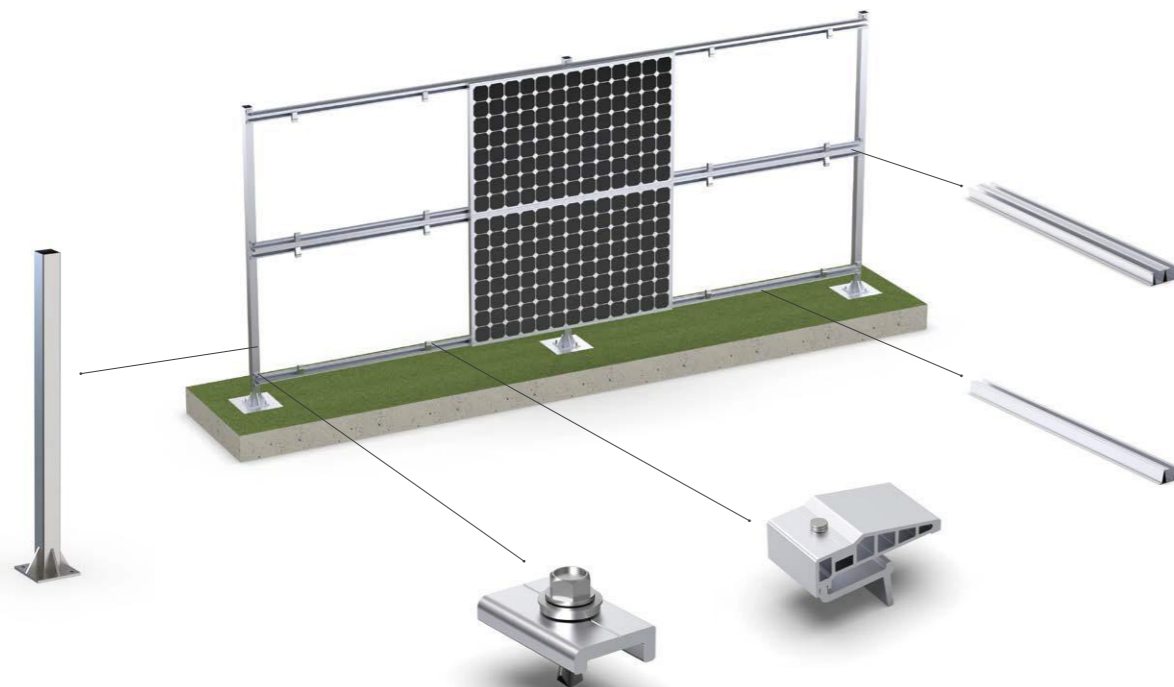
# Solar Fence System

The SAIL SOLAR Fence System is an innovative solution in solar energy utilization and space optimization, designed to be flexible and adaptable to different installation requirements. The Solar Piling Foundation Fence Mounting System and the Solar Concrete Foundation Fence Mounting System are two installation methods that are easy to install. The column is made of hot-dip galvanized steel with a transverse aluminum rail to fix the long side of the solar panel. It is strong and durable, with good corrosion resistance and wind resistance. Its vertical modular structure can adapt to all kinds of fence forms and a variety of PV modules. By raising the height of PV panels, optimizing light reception and reducing ground shading, it can realize the utilization of three functions of land, power generation and fence, saving a lot of space and being more economical and efficient.

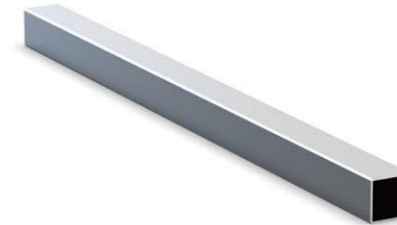
## Technical features:

Product name	Solar Fence System
Application	Family courtyard gardens, Open terrain
Tilt	90°
System material	AL6005-T5, Q235
Fastener material	SUS 304
Finish	AL 6005-T5 Anodized, Q235 Hot-dip galvanized
Module orientation	Landscape

## Assembly



## Assembly



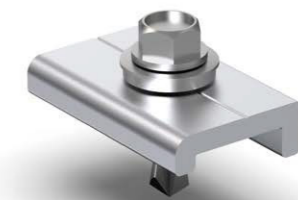
SAS-PFP (Solar Piling Foundation Fence Mounting System)



SAS-CFP (Solar Concrete Foundation Fence Mounting System)



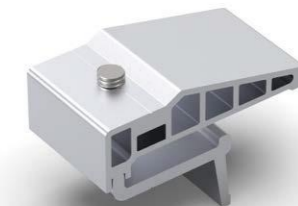
SAS-RWT-S



SAS-FRC



SAS-RWT



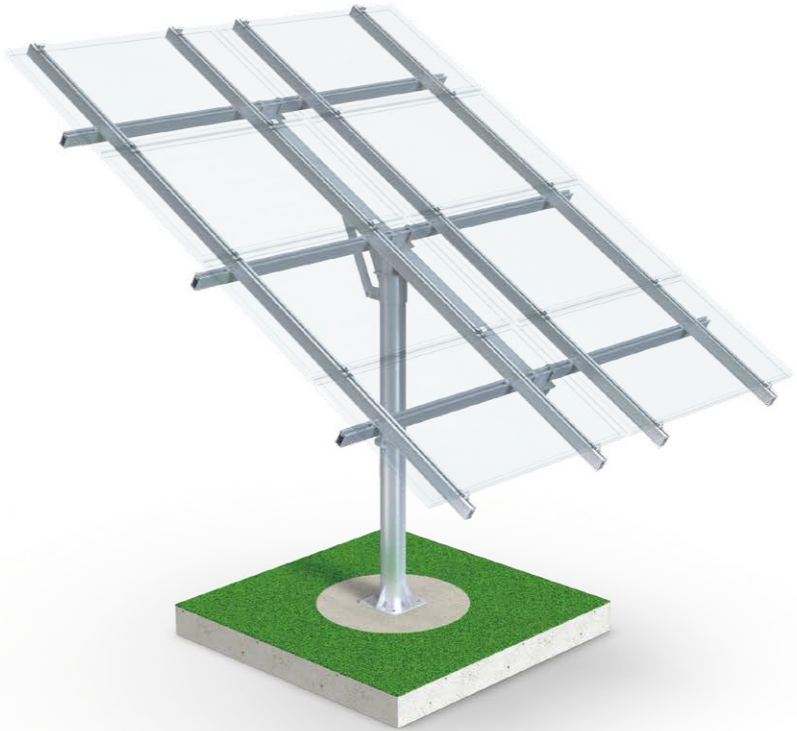
SAS-PVC

# Pole Mounting



SAIL SOLAR pole mounting system have different angles options of 3, 4, 6, 8 panels. Simple design is ideal for remote off-grid applications such as water pumps for farm, or small residential and commercial systems etc. It can meet the customers need different angles and power generation. Packing in wooden cases each, easy to transport and install.

Technical features:	
Product name	Pole mounting system;
Application	Outdoor
Inclination	0-40°
Material	AL6005-T5, SUS304, Q235
Finish	AL 6005-T5 Anodized, Q235 Hot-dip galvanizin



**8 Panels Pole Mounting**



**3 Panels Pole Mounting**

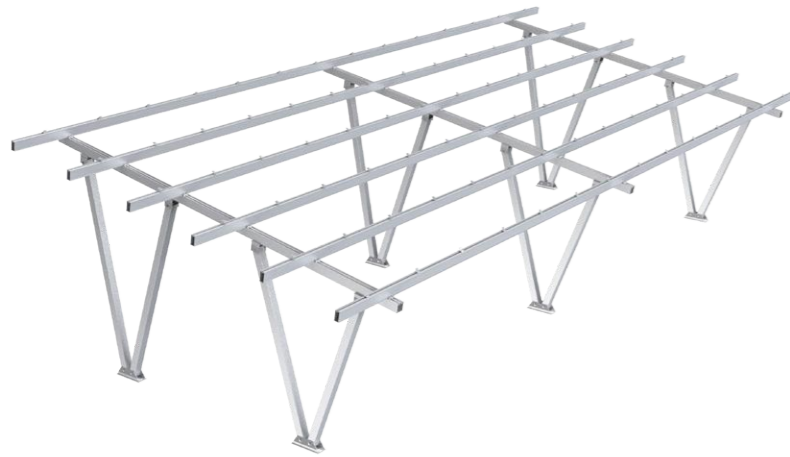


**4 Panels Pole Mounting**



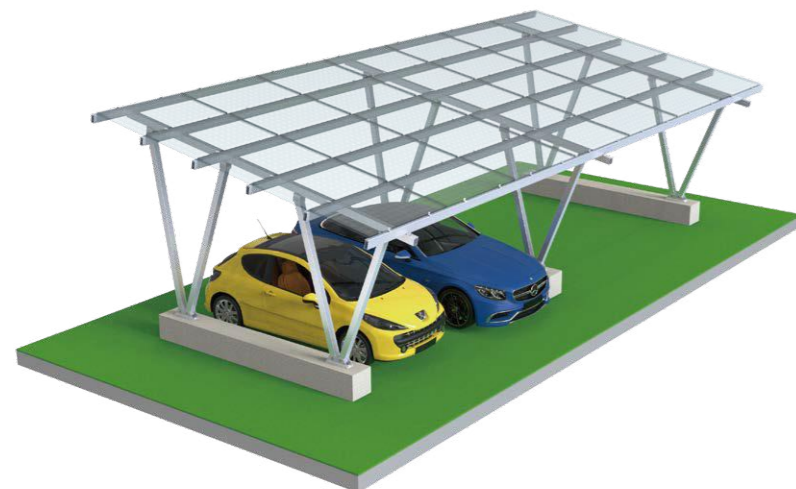
**6 Panels Pole Mounting**

# Carport Mounting



## Carport Mounting System

SAIL SOLAR Carport Mounting Systems offers a simplified and economical solutions that provides a perfect combination of Shade parking and solar power generation as well as electric vehicle charging. It applied for family parking, commercial parking, awnings and even bus stops.



### 1 Assembly

- SAS-GIC 
- SAS-R125 
- SAS-GEC 
- SAS-GRC 
- SAS-CEC 
- SAS-W110 

### 2 Assembly

- SAS-B110 
- SAS-CPS 
- SAS-CPH-01 
- SAS-CPB-02 
- SAS-BEC 
- SAS-SFR-B110 



highly pre-assembled main structure for solar modules landscape or portrait 5°/ 8°/10°inclination or custom customized and engineered to project maximal span up to 5.4m cover up to 2 parking spaces per span.

Technical features:	
Product name	Carport mounting system
Application	Solar parking structure
Inclination	5°, 8°, 10° or customized
Material	AL 6005-T5, SUS 304
Finish	AL 6005-T5 Anodized
Module orientation	Landscape

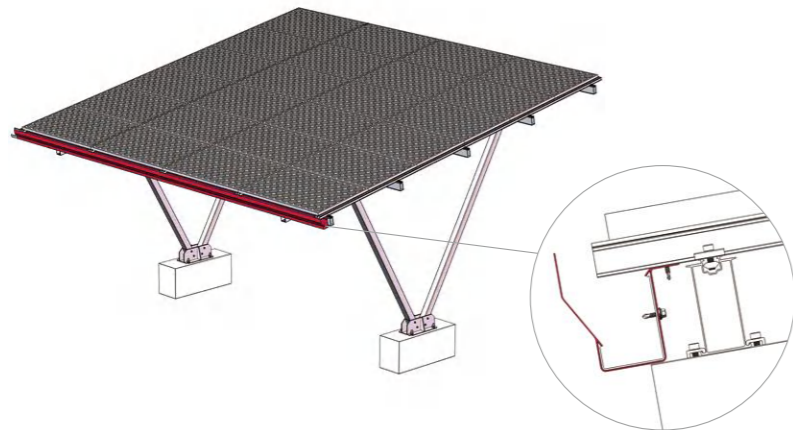


# Waterproof Carport System



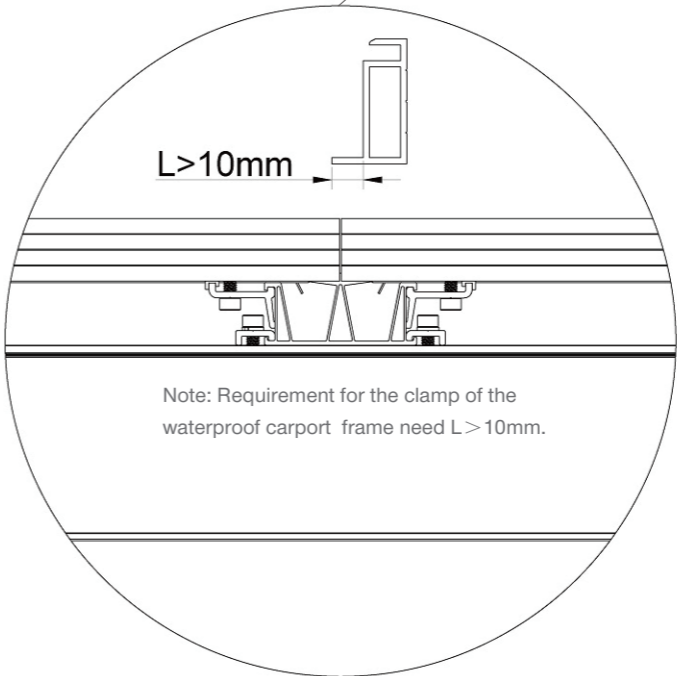
Our carport systems are sold to Africa, the Middle East, Southeast Asia, Europe and the South America. The idle area of the parking shed is used to build a photovoltaic parking shed, and the combination of photovoltaic power generation and carport is the simplest one in the combination of photovoltaic and building. It can not only achieve all the functions of the traditional carport, but also bring electricity generation benefits to the owner. It is stored in the battery by the charging device or directly supplied to the electric vehicle to charge for self-use. You can even use extra power to get online. Using aluminum alloy structure bracket, simple installation, generous, fashionable, elegant.

Product Overview:	
Install Site	Flat outdoor
Material	AL6005-T5, SUS304
Standards	AS/NZ1170.2、JIS C 8955、MCS 012、TUV、UL2703 etc
Tilt Angle	5°, 8°, 10° or customized



## 1 Assembly

- SAS-R125
- SAS-CPS
- SAS-B110
- SAS-CPH-01
- SAS-CPS-02
- SAS-GRC
- SAS-PVC
- SAS-CEC



- Features:**
1. Good heat absorption.
  2. Good waterproof and rain protection, convenient installation, and flexibility.
  3. Make full use of the original site to provide green energy.
  4. Suitable for frame panel: Poly modules, double glass module etc.

- Installation place:** home, company, shopping mall, large parking lot.  
**Parking category:** battery car/bicycle, car, bus.  
**Number of parking Spaces:** 1 parking space, 2 parking Spaces, 3 parking Spaces, multiple parking Spaces (large span).  
**By row:** single row parking space, double row parking space.

## 2 Assembly

- SAS-HWT
- SAS-RWT
- SAS-RWC
- SAS-SFR-07
- SAS-SFR-B110
- SAS-CGR
- SAS-BEC



## Sail Solar Energy Co., Ltd.

Tel: +86 - 18655186412

Mail: [info@sailsolarpv.com](mailto:info@sailsolarpv.com)

web: [www.sailsolarpv.com](http://www.sailsolarpv.com)

web: [www.sailsolaress.com](http://www.sailsolaress.com)

Add: Cross Border E-Commerce Supervision Zone, Yulei Road, Hefei, Anhui, China

Product Catalog Solar Mounting Solutions



ISO 9001: 2015 quality management system certified